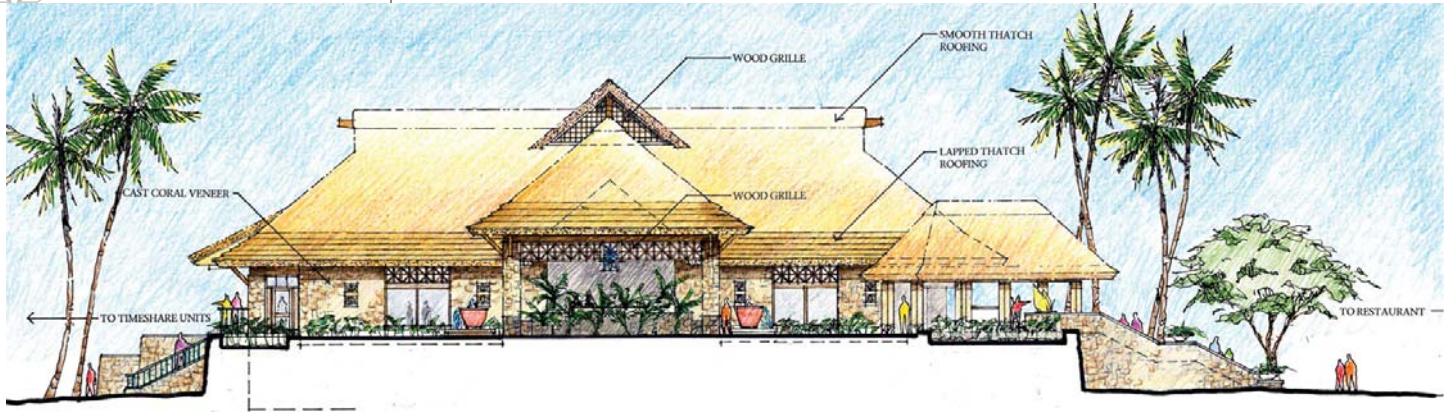




Completion Date  
 Cost  
 Project Type  
 Client

Proposal  
 \$15,000,000  
 Resort  
 Nikken Corporation



Clubhouse Entry Elevation



Clubhouse Ocean Side Elevation

## Waikoloa Beach Club

Waikoloa, Hawaii

The 35,000 square foot Beach Club development includes a members club, dining facility, spa complex with swimming pools and whirlpool, administrative offices and four "fractional" time-share dwelling units. The project integrates environmentally sensitive anchialine ponds and two petroglyph sites. Additional water features tie together the various elements.





# Waikoloa Beach Club

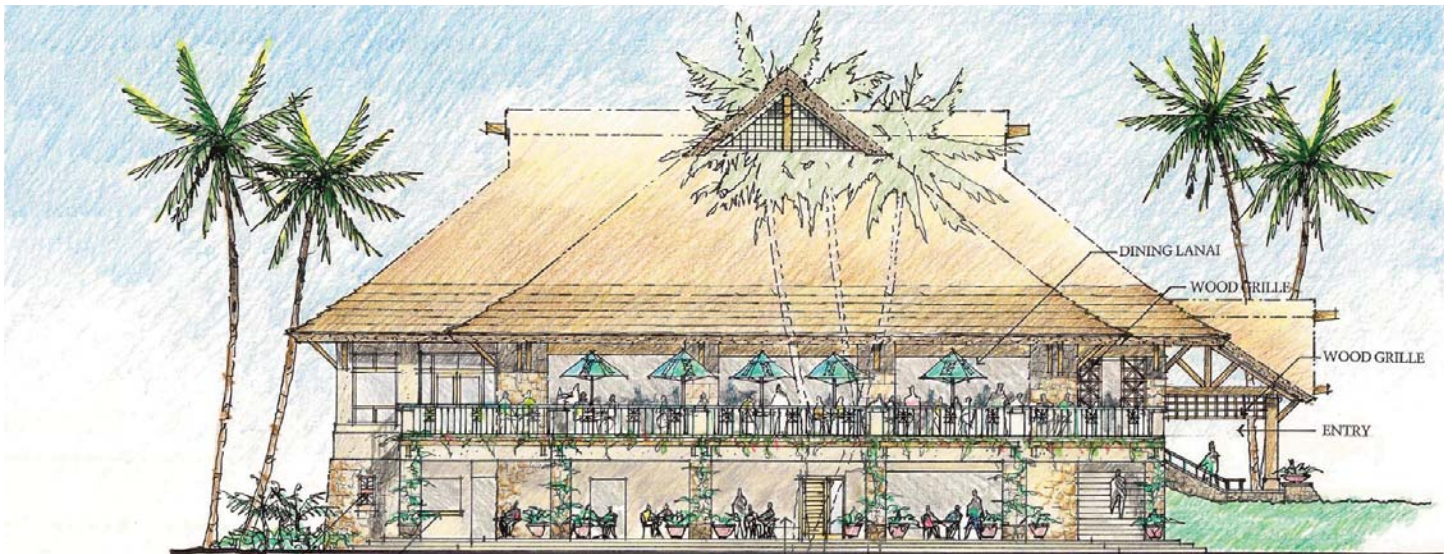
Waikoloa, Hawaii





Completion Date  
 Project Type  
 Client

Proposal  
 Hospitality - Restaurant & Spa  
 Nikken Corporation



## Waikoloa Beach Club Restaurant

Waikoloa, Hawaii

Part of the proposed 10-acre Beach Club for the existing Waikoloa Bay Club timeshare resort, this 220-seat beachside restaurant is situated on the upper floor along with a 64-seat lounge and bar and main kitchen. A large covered balcony provides excellent views to Anaehoomalu Bay, and a landscaped courtyard off the lounge provides 40 seats around a water feature. The lower level of the facility includes a 64-seat poolside café with takeout counter, kids' activities room, guest toilet and shower facilities and staff break facilities. Poolside and beach service to lounging guests is also provided from the lower level café. The textured coral veneer walls, exposed wood framing and steeply pitched synthetic reed-thatched roof create a contemporary Hawaiian feel to this outdoor-oriented facility.



Completion Date  
Project Type  
Client

Proposal  
Hospitality - Restaurant & Spa  
Nikken Corporation



## Waikoloa Beach Club Spa

Waikoloa, Hawaii

Situated on the former Parker Ranch Anaehoomalu Bay picnic grounds, this 10-acre proposed development for the existing Waikoloa Bay Club timeshare resort included a members' Clubhouse, Dining facility, and Spa in addition to pools, water features and outdoor recreation facilities. The Spa was designed as a multi-pavilion facility around an existing anchaline pond and mature coconut tree grove. Nestled between existing coconut trees, four outdoor treatment pavilions sit along the edge of the pond, and the cardio and fitness pavilions also open out to the pond. Men's and Women's locker and shower facilities include steam and sauna rooms, Japanese furo soaking spas, hot and chilled walking footbaths, and waterfall showers. Separated garden treatment pavilions are large enough to accommodate two treatments simultaneously, and a juice bar located off the main common courtyard provides a healthy drink menu.